

CO-SPONSORS

**FINNEGAN** is dedicated to advancing the ideas, discoveries, and innovations that drive businesses around the world. From offices in the United States, Europe, and Asia, we work with leading corporations and innovators in virtually every industry and technology to protect, advocate, and leverage their most important intellectual property assets. [www.finnegan.com](http://www.finnegan.com).

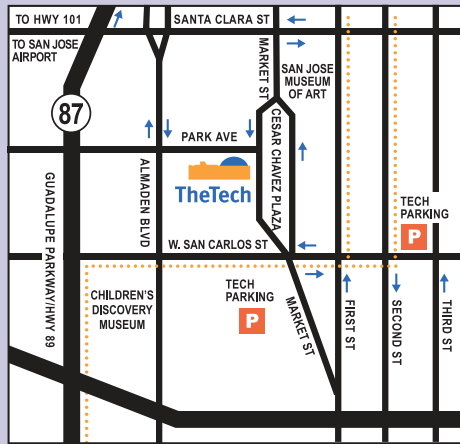
**townsend.** Townsend and Townsend and Crew LLP, one of the nation's leading intellectual property law firms, teams with businesses, inventors, entrepreneurs, scientists and investors to protect their innovative products and ideas. With offices in San Francisco, Palo Alto, Walnut Creek, San Diego, Denver, Seattle, Washington, DC and Tokyo, Townsend has more than 230 attorneys and patent professionals, many with advanced technical degrees and extensive scientific and business experience. [www.townsend.com](http://www.townsend.com).



**Parking Information**

Bring your parking ticket to the Tech Museum for validation. Discounted, validated parking (\$5) is available at:

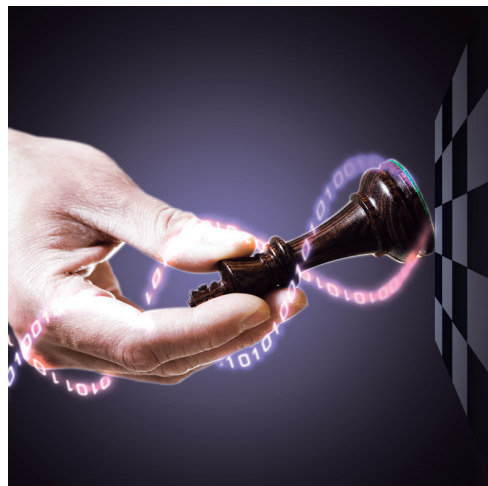
1. Second and San Carlos Streets Garage – 280 S. Second St., also accessible from S. Third St.
2. Convention Center Garage (enter from Market Street or Almaden Blvd.).
3. Third Street lot between The 88 and Repertory Theater – 80 E. San Fernando St.
4. Market and San Pedro Garage – 45 N. Market St., between Santa Clara St. and St. John St.
5. Third Street Garage – 95 N. Third St., just north of Santa Clara St.
6. Fourth and St. John Garage – 50 N. Fourth St.



Additional non-validated parking is available in downtown. Handicapped parking is available for vehicles with disabled parking permits on S. Market St., near the main entrance of the Tech Museum.

First Class Mail  
U.S. Postage  
**PAID**  
Permit No. 22  
Santa Clara, CA

Santa Clara  
Computer & High Technology  
Law Journal  
500 El Camino Real  
Santa Clara, CA 95053-0421



Shifting  
**Strategies**  
In Patent Law

January 30, 2009

# Shifting Strategies In Patent Law

How the ITC, Non-Practicing Entities, and Inequitable Conduct Are Changing the Patent Arena

**January 30, 2009**

THE TECH MUSEUM OF INNOVATION  
201 SOUTH MARKET ST., SAN JOSE, CA 95113

SANTA CLARA UNIVERSITY SCHOOL OF LAW



The 2009 Santa Clara Computer & High Technology Law Journal Symposium takes place in the heart of Silicon Valley, where innovation is happening every day. For years, the *Journal* has dedicated symposia to the exploration of key issues at the intersection of law and technology. This year, the Santa Clara Computer & High Technology Law Journal Symposium will explore the current key players, issues and strategies shaping the structure of patent law.

A dramatic rise in filings with the International Trade Commission for patent infringement suits, an increased prevalence of Non-Practicing Entities, and frequent use of inequitable conduct as a defense to patent infringement have significantly affected the evolution of patent law today. The actors involved are greatly influencing substantive law, in both federal courts and the ITC, and are challenging the conceptions and attitudes of legislators, policymakers, and practitioners toward intellectual property, making this practice area a dynamic and exciting field. The 2009 Symposium will explore and examine these changes and their impact upon high technology law.

### Agenda - Friday, Jan. 30

8:00 – 8:45 a.m.	<b>Registration and Continental Breakfast</b>
8:45 – 9:00 a.m.	<b>Introduction:</b> Dave Martens, Editor-in-Chief, <i>Santa Clara Computer &amp; High Technology Law Journal</i>
9:00 – 10:45 a.m.	<b>Panel 1: The International Trade Commission</b>
10:45 – 11:00 a.m.	<b>Break</b>
11:00 a.m. – 12:30 p.m.	<b>Panel 2: The Role of Non-Practicing Entities</b>
12:30 – 2:30 p.m.	<b>Lunch</b> 25th Anniversary Remarks by Dean Donald Polden, Santa Clara University School of Law <b>Lunch Keynote</b> - Judge Randall R. Rader, Circuit Judge, United States Court of Appeals for the Federal Circuit
2:30 – 4:00 p.m.	<b>Panel 3: Ethical Implications of Inequitable Conduct</b>
4:00 – 5:00 p.m.	<b>Wine &amp; Cheese Reception</b>

## Panel 1 The International Trade Commission



**MODERATOR**  
**Colleen Chien**  
Assistant Professor of Law, Santa Clara University School of Law

**PANELISTS**  
**V. James Adduci II** - Partner, Adduci, Mastriani and Schaumburg LLP; Former Chairman of the International Trade Committee of the Federal Circuit Bar, Former Counsel for the ITC

**Bas de Blank** - Partner, Orrick, Herrington & Sutcliffe LLP

**Guy W. Chambers** - Partner, Townsend and Townsend and Crew LLP

**Harvey Fox** - Partner, Adduci, Mastriani & Schaumburg LLP; Former Director, Office of Regulations and Rulings, U.S. Customs Service

**Sapna Kumar** - Law Clerk, Hon. Judge Kenneth F. Ripple, U.S. Court of Appeals for the Seventh Circuit

**Lily Lim** - Partner, Finnegan, Henderson, Farabow, Garrett & Dunner LLP

## Panel 2 The Role of Non-Practicing Entities



**MODERATOR**  
**Ronald Katz**  
Partner, Manatt, Phelps & Phillips LLP; Lecturer, Santa Clara University School of Law

### PANELISTS

**Chris Holman** - Associate Professor of Law, University of Missouri-Kansas City School of Law

**Scott Kieff** - Professor of Law, Washington University in St. Louis School of Law

**Thomas Lavelle** - Senior Vice-President and General Counsel, Rambus

**Mark Lemley** - Professor, Stanford Law School; Of Counsel, Kecker & Van Nest LLP



## Lunch Keynote

**Honorable Randall R. Rader** was appointed to the United States Court of Appeals for the Federal Circuit by President George Bush in 1990. President Ronald Reagan appointed him to the United States Claims Court in 1988. Prior to his appointment, Judge Rader served as Counsel to the Senate Judiciary Committee from 1980 to 1988, and as Counsel in the House of Representatives from 1975 to 1980. While counsel to the Judiciary Committee, he was Minority Chief Counsel for the Subcommittee on the Constitution and the Subcommittee on Patents, Trademarks, and Copyrights. Judge Rader has taught Patent Law and various general and specialized intellectual property law courses at the University of Virginia School of Law, George Washington University National Law Center, and Georgetown University Law Center. Judge Rader is co-author of a casebook, *Patent Law*, published by West Publishing in 1998.

## Panel 3 Ethical Implications of Inequitable Conduct



**MODERATOR**  
**Michelle Greer Galloway**  
Of Counsel, Cooley Godward Kronish LLP; Lecturer, Santa Clara University School of Law; Lecturer, Stanford Law School

**PANELISTS**  
**Stephen Akerley** - Partner, O'Melveny & Myers LLP

**Dennis Crouch** - Blogger, Patently-O; Associate Professor of Law, University of Missouri School of Law

**David Hricik** - Professor of Law, Mercer University School of Law

**Erik Puknys** - Partner, Finnegan, Henderson, Farabow, Garrett & Dunner LLP

**Robert Sachs** - Partner, Fenwick & West LLP

## Register Online

Please register online at the *Santa Clara Computer & High Technology Law Journal* website: [www.chtlj.org](http://www.chtlj.org)

Attendance at the Symposium is FREE for those who register prior to the event and do not require MCLE credits.

Includes breakfast, lunch, and reception.

### IF SEEKING MCLE CREDITS:

\$50 if registered on or before January 15, 2009.

\$100 if registered after January 15, 2009.

\$125 if registered at the door.

Reserved seating is available for the event.

To purchase a reserved table with preferred seating, please contact Karen Ko at [karen.ko@chtlj.org](mailto:karen.ko@chtlj.org) or at (408) 554-4197.

### Need some last minute MCLE credits for the February 2, 2009 deadline?

All credits received during this Symposium will qualify for the MCLE period ending February 2, 2009.

Computers will be available for immediate submission of electronic compliance cards. If you are planning to submit an electronic compliance card, please ensure you bring your access code, which is on the top right corner of your fee statement.

### CANCELLATION POLICY

A refund, less \$50, will be made for all written cancellations received by January 18, 2009. No refunds will be made after this date.

### SUBSCRIPTION INFORMATION

The *Santa Clara Computer & High Technology Law Journal* is consistently ranked as one of the top technology law journals in the nation. The *Journal* publishes four issues throughout the year. For those interested in subscribing to the *Santa Clara Computer & High Technology Law Journal*, please visit our website at: <http://www.chtlj.org>.

### STREAMING ONLINE

After the Symposium, view the panel discussions online at <http://www.chtlj.org>. There will be a fee for MCLE credit.

**MCLE:** Santa Clara University School of Law is a State Bar of California approved MCLE provider. The NPE and ITC panels, as well as the Keynote, are approved for 4 hours of general MCLE credit; the Inequitable Conduct panel is approved for 1.5 hours of ethics MCLE credit for paid attendees. As the provider, *Santa Clara Computer & High Technology Law Journal* will retain the required MCLE records for this program.

**SPECIAL NEEDS:** If you have a disability or require reasonable accommodation, please call the *Santa Clara Computer & High Technology Law Journal* at (408) 554-4197 or California Relay at (800) 735-2929 (TTY) at least 72 hours prior to the event.

**SUBSTITUTIONS:** Occasionally a featured speaker may be unable to meet his or her commitment due to illness or emergency. We will make every attempt to substitute an equally qualified presenter for the event, but cannot guarantee advance notice of substitution.

### ABOUT THE LAW

**SCHOOL:** Santa Clara University is a comprehensive Jesuit Catholic university located in California's Silicon Valley. The intellectual property program is consistently ranked among the best in the nation. In 2008, the intellectual property program is ranked by the *U.S. News & World Report* as one of the top 10 programs in the nation. Visit our web site at <http://law.scu.edu/>.